

**ESTER**

MODERN BOLLARD



Architectural LED lamp range in modern style, made of shockproof resin material, UV-rays stabilized, rust and corrosion-free. Square bollards in different sizes, spike and wall mounted versions available. Supplied with stepped shape reflector and with TÜV approved, long-life and efficient **GX53 LED lamps included**. Insulation class II, Protection rating IP55.

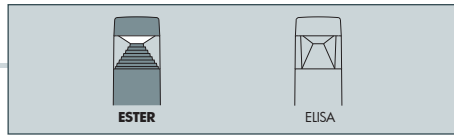
*Collezione di lampade architettoniche a LED in stile moderno, realizzata in resina antiurto, stabilizzata ai raggi UV, inattaccabile da ruggine e corrosione. Ampia gamma di versioni disponibili per installazioni su stelo bollard quadro in diverse altezze, con picchetto o a parete. Provvista di riflettore a scaletta piramidale e fornita con **lampadine a LED GX53** approvate TÜV di lunga durata ed elevata efficienza. Classe di isolamento II, grado di protezione IP55.*



DS1.564.D1L

UV-TREATED	DOUBLE INSULATION		PUBLIC	RESIDENTIAL
RECYCLABLE	ANTI-SHOCK	TEMPERATURE	WALL	POST
				SPIKE





**ESTER COMPONENTS**

**IP55**



**CAP** fixed to the diffuser with no visible screws made of shockproof resin material, UV-rays stabilized, rust and corrosion-free.

**CALOTTA** fissata al diffusore senza viti a vista, realizzata in resina antiurto, stabilizzata ai raggi UV, inattaccabile da ruggine e corrosione

**DIFFUSER** in clear colour made of UV-rays stabilized polymethylmethacrilate (PMMA).

**DIFFUSORE** trasparente realizzato in polimetilmetacrilato (PMMA) resistente all'ingiallimento ed ai raggi UV.

**REFLECTOR** with stepped shape spreading the lighting output to emphasize the shape of the product. Made of shockproof resin material

**RIFLETTORE** a scaletta piramidale che consente al fascio di luce di enfatizzare la sagoma del prodotto. Realizzato in resina antiurto.



**INSTALLATION ELEMENTS:**

- POLES for bollard versions
- BASE for wall and surface installation
- SPIKE for in ground installation

**ELEMENTI DI FISSAGGIO:**

- STELI per versione bollard
- BASE per installazione a parete e al suolo
- PICCHETTO per installazione nel terreno



**ESTER**

**Dimensions**

Height: 165/500/800 mm  
Width: 126 mm  
Depth: 126 mm

**Moulded colours:**

- Black
- White
- Grey

**Diffuser PMMA:**

- Clear

**GX53 LED**

\*ADD. SUFFIX



GX53 LED	W	Lm	4000 K	3000 K	SUFFIX
GX53 LED	3 W	350 Lm	4000 K	3000 K	.G1L
					.G1R
GX53 LED	7 W	800 Lm	4000 K	3000 K	.C1L
					.C1R
GX53 LED	10 W	1200 Lm	4000 K	3000 K	.D1L
					.D1R

- **COST SAVING:** long-life and efficient LED light sources
- **BUILT-IN DRIVER:** quick and easy lamp replacement
- **GREAT FLEXIBILITY:** GX53 standard lamp holder
- **FUTURE-PROOFED LUMINARIES:** easy to upgrade
- **SUITABLE FOR OUTDOOR USE:** driver fully protected against heat and humidity by silicone paste.

Bollard supplied with TÜV approved, long-life and efficient **GX53 LED lamp** included. Different wattages available.

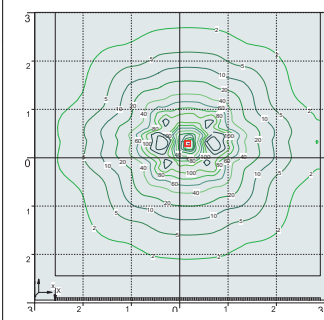
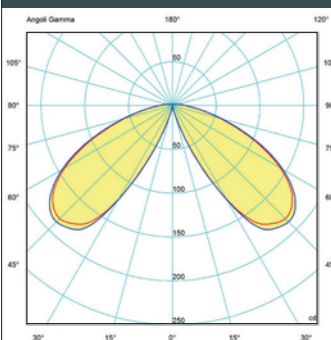
**LED LAMPS**



More technical details about TÜV approved Fumagalli LED Lamps on page 512.

\* ADD THESE SUFFIXES TO THE REFERENCES MENTIONED IN THE CATALOGUE

**PHOTOMETRIC DATA SAMPLE**



**ESTER 800** clear GX53 10W.

Bollard height 0,8 mt  
Area: 6x6 mt - average 15 lux

The photometric data for all the versions are available upon request or on our website.

**3W**  
**350 Lm**

=

**40W**  
incandescent

**SAVE 93%**

**7W**  
**10W**

=

**75W**  
**100W**  
incandescent

**SAVE 90%**

**ESTER**

MODERN BOLLARD



**DS1.564.D1L**



**DS1.560.D1L**

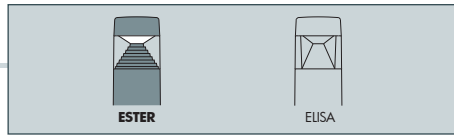


**DS1.561.D1L**



**DS1.563.D1L**





ESTER 800		
DS1.564.G1L	<b>3W</b>	DS1.564.G1R
DS1.564.C1L	<b>7W</b>	DS1.564.C1R
DS1.564.D1L	<b>10W</b>	DS1.564.D1R
4000K	GX53 LED LAMP INCLUDED	3000K
Pcs 6 Kg 16 mc 0,145		

ESTER 500		
DS1.563.G1L	<b>3W</b>	DS1.563.G1R
DS1.563.C1L	<b>7W</b>	DS1.563.C1R
DS1.563.D1L	<b>10W</b>	DS1.563.D1R
4000K	GX53 LED LAMP INCLUDED	3000K
Pcs 12 Kg 24 mc 0,145		

ESTER WALL		
DS1.560.G1L	<b>3W</b>	DS1.560.G1R
DS1.560.C1L	<b>7W</b>	DS1.560.C1R
DS1.560.D1L	<b>10W</b>	DS1.560.D1R
4000K	GX53 LED LAMP INCLUDED	3000K
Pcs 18 Kg 22 mc 0,092		

ESTER SPIKE		
DS1.561.G1L	<b>3W</b>	DS1.561.G1R
DS1.561.C1L	<b>7W</b>	DS1.561.C1R
DS1.561.D1L	<b>10W</b>	DS1.561.D1R
4000K	GX53 LED LAMP INCLUDED	3000K
Pcs 18 Kg 23 mc 0,092		